



A Hoosier Racing Tire SCCA Super Tour  
The 68<sup>th</sup> Cumberland Classic  
Steel Cities Region  
August 28 - 30 2020  
Pittsburgh International Race Complex  
Sanction # 20-ST-8358, #20-R-19880



*The SCCA strives to ensure that ALL participants in its events and activities enjoy a welcoming environment. The SCCA supports equality of opportunity and treatment for all participants and will make every effort to maintain an environment that is free of harassment, discrimination, and any behavior that interferes with a safe, fun, and exciting experience. A commitment to a welcoming environment and the SCCA Values is expected of all its members and attendees, including drivers, workers, crew, guests, staff, contractors and exhibitors, and other participants at SCCA activities, sessions and social events and when representing the SCCA in print or electronic media.*

**Notice to Participants:** *In light of the current COVID-19 situation, every attempt will be made to minimize the risks of exposure to the virus. New processes and procedures are being developed and will be put into place for events going forward.*

*Ultimately, it is your responsibility to assess the risk to you, both on-track and off, and to make the decision on whether or not to participate. If you are feeling unwell or are experiencing symptoms such as fever, cough, or shortness of breath please stay home. If you have been in contact with someone who has been experiencing these symptoms in the last two weeks, please stay home.*

*While at PittRace please take the health and safety of your fellow participants, volunteers and staff into consideration and practice social distancing, wear a mask, and wash your hands and/or use hand sanitizer frequently.*

## SUPPLEMENTAL REGULATIONS

This event is governed by the 2020 General Competition Rules (GCR) and Category Specifications, as amended for 2020 per "Fastracks" and these Supplemental Regulations

### I. REGISTRATION and FEES

**A. TEST DAY:** PittRace will hold a "Test and Tune" day on Thursday, 27 August 2020. Additional information is available on [MotorsportsReg](#) or contact PittRace at 724-535-1000. The "Test and Tune" is not an SCCA sanctioned event.

### **B. ENTRY FEES:**

- Super Tour Entries:** (Sanction 20-ST-8358) The entry fee for the first entry is \$695.00. Each additional entry is \$350.00 (Double-dip Same Driver and car in a different class). Each SRF3, FE2 entry will be charged an additional \$30.00 compliance fee per entry for the weekend. Each SM entry will be charged an additional \$20.00 compliance fee per entry for the weekend. Late registration fee (walk ups) is \$50.00.
- Great Lakes Championship Series:** (Sanction 20-R-19880) The entry fee for this series is \$645.00. If the driver is also entered in the Super Tour, the fee is \$300.00. Late registration fee (walk ups) is \$50.00.

**C. PAYMENTS & REFUNDS:** Register online at [MotorsportReg.com](#). Drivers without internet access may request a paper entry form and mail it with their entry fees to the Registrar:

Steel Cities Region, C/O Meichelle Connolly, 6334 Helen Street, South Park, PA 15129-8827

**Payment Options:** There are three (3) ways to pay your entry fee:

- By credit card online. To register but defer payment look for the button that says **Skip Payment & Complete Registration** on the **Confirm & Pay** page of the online registration form. If you use this feature we will charge your card upon check-in at the track.





**Hoosier Racing Tire SCCA Super Tour  
Steel Cities Region 68<sup>th</sup> Cumberland Classic**

August 27 – 30  
Pittsburgh International Race Complex  
Sanction 20 – 8358, 20-R-19880



2. Mail a check to the above address at least 1 week before the event.
3. Pay at the track (cash, check, credit card)

**D. CREW PASSES:** Hot crew must be SCCA members (weekend are available at \$25.00). There is no charge for guests who are in the paddock.

**E. PADDOCK AND GARAGE RESERVATION:** Contact [PittRace](#) for garage and paddock reservations.

**F. PREFERRED NUMBERS:** Every effort will be made to honor Conference Preferred Numbers until 14 days prior to the event. However, due to the make-up of the run groups, this may not be possible in all situations. If two drivers holding the same Preferred Number and request that number for the same run group, the number will be assigned to the driver with the earliest request.

**G. FREE ENTRY GIVEAWAY:** A free entry will be awarded to one driver registering for the event a minimum of 14 days prior to the weekend. Driver name will be drawn at the event party or other designated time.

**H. PADDOCK/PARKING INFORMATION:** PittRace is a multiple use facility. Paddock parking for this event is areas 1B, 1C, 2A, 2B, 2C, 4A and 4B as shown on the attached track map.

## II. DRIVER INFORMATION

### A. DRIVER ELIGIBILITY:

- a. **Super Tour Drivers:** (Sanction 20-ST-8358) Each driver must be a current member of the SCCA and hold a SCCA Full Competition license or a full SCCA Pro license to participate in this event. If you do not have the proper credentials it is your responsibility to contact the Registrar prior to the event.
- b. **Great Lakes Championship Drivers:** (Sanction 20-R-19880) Each driver must be a current member of the SCCA and hold a license that meets GCR section 3.1.2

### B. CAR ELIGIBILITY:

- a. **Super Tour:** (Sanction 20-ST-8358) Competition is open to all Runoffs eligible cars conforming to the current GCR, as amended.
- b. **Great Lakes Championship:** (Sanction 20-R-19880) Competition is open to all FC/CFC cars conforming to the Great Lakes Championship Series Rules at [greatlakeschampionship.com/formula-c](http://greatlakeschampionship.com/formula-c)

**C. TIMING & SCORING:** All competition vehicles must be equipped with a working MyLaps transponder. The driver is responsible for providing the correct information to Timing & Scoring. Be sure your transponder is on and function for ALL SESSIONS. Vehicles without working transponders will not receive lap times and may not be scored. Rental transponders may be available from PittRace. Information gathered from personal timing and data collection systems is unofficial and will not be used by race officials. Efforts will be made to broadcast sector times during all sessions.

**D. COURSE:** The track length is 2.78 miles on the North and South combined circuit.

**E. BLACK FLAG:** The Black Flag stations are Driver's left at Station 16 and the Start/Finish. When you are black flagged, report to the Black Flag (SOC) Pit (Pit #1) and wait for an official to clear you to resume driving.

**F. SOUND CONTROL:** Sound control microphone is located driver's left, approximately across from Station 18. The sound limit is 103 db. Sound readings will be posted at driver information.

**G. WARM-UP SESSIONS/HARDSHIP LAPS:** There are closed wheel and open wheel hardship sessions scheduled for Sunday morning. With the permission of the Race Director and the Clerk of the Course, a reduced speed hardship lap may be requested by a driver between run groups.





**Hoosier Racing Tire SCCA Super Tour  
Steel Cities Region 68<sup>th</sup> Cumberland Classic**

August 27 – 30

Pittsburgh International Race Complex  
Sanction 20 – 8358, 20-R-19880



- H. **AWARDS:** Trophies for all races will be awarded in accordance with the GCR. Trophies will be presented at the event. SCCA U.S. Majors Tour and Hoosier Racing Tire SCCA Super Tour points will be awarded in accordance with the GCR and these Supplemental Regulations.
- I. **VICTORY LAPS:** Winners of all races will receive a checkered flag. For Race 2, following the cool down lap, the winner of each class should proceed immediately to pit central where they will receive a checkered flag and may proceed on course for a single Victory Lap. The victory lap will be conditional based on weather, track conditions and schedule. Drivers do not need to wear their helmet or gloves during the victory lap, passengers are permitted in accordance with GCR 6.11.7. Drivers shall maintain a safe speed and be wary of safety vehicles that may be on course.
- J. **BLEND LINE:** The Blend Line at pit out will be enforced. Crossing the Blend line while exiting pit lane or while on track is prohibited. During practice, qualifying or race 1 if you cross the blend line you will receive a time penalty sufficient to lose 1 grid or finishing position. If you cross the blend line during race 2 you will lose a finishing position.

**III. CAR SAFETY and TECH INSPECTION**

- A. **DECALS:** A Hoosier SCCA Super Tour decal and a U.S. Majors Tour decal must be displayed on both sides of all competition vehicles in the Super Tour. Competition vehicles must also display the official SCCA Road Racing decal per GCR section 9.3.28.C (Figure 4.) Stickers will be provided free of charge and may be obtained at registration and/or tech. (The official SCCA Summit Racing Equipment Road Racing decal does not serve as the Summit Racing Equipment contingency program decal.)
- B. **DATA ACQUISITION:** Hoosier SCCA Super Tour staff and their delegates may install data acquisition equipment in a competitor's car. This program is to assist the CRB in performance balancing. If selected, participation is not optional and is not protestable. The data collected from the device will not be used for compliance purposes. All cars carrying an SCCA data collection device must report to impound after their session. Failure to do so may result in penalties.
- C. **SPEC MIATA COMPLIANCE:** At post-race inspection, Spec Miata participants may be instructed by the designated Class Compliance Chief (CCC) to remove parts, including but not limited to the cylinder head, for disassembly and/or inspection. Competitors are responsible for performing required disassembly and/or reassembly of their car, as well as any resulting expenses incurred. The CCC will report any findings of non-compliance to the Race Director, who will then determine the need for a Chief Steward's Action (CSA) or Request for Action (RFA).
- D. **SCALES:** Availability of scales and times will be posted at Tech. Scales will not be available for general use during impound.

**IV. QUALIFYING**

**A. GRID:**

Grid positions for the practice session will be set using each driver's post mark/time stamp on the entry form.

Qualifying 1 will be gridded based on the fastest lap in the official practice session.

Qualifying 2 will be gridded based on the fastest lap in Qualifying 1.

Grid positions for race 1 will be determined by the fastest official time recorded for each car from the either of the preceding qualifying sessions.

Grid positions for race 2 will be determined by the fastest official time recorded for each car during any of the preceding qualifying sessions or the fastest official lap during race 1.





Hoosier Racing Tire SCCA Super Tour  
Steel Cities Region 68<sup>th</sup> Cumberland Classic

August 27 – 30  
Pittsburgh International Race Complex  
Sanction 20 – 8358, 20-R-19880



Any driver who does not have an official time must obtain approval from the Race Director to be gridded for the races.

- B. **QUALIFYING:** A Super Tour driver not qualifying within a maximum of 115% of the recognized track record of their class must obtain permission from the Race Director to race. In the case of unusual circumstances, the Race Director can waive this rule for the entire event. Great Lakes Championship drivers running in Group 8 are not subject to the 115% rule.

Class	115%	Record	Class	115%	Record	Class	115%	Record
AS	2:11.23	1:54.11	FX	2:08.46	1:51.70	SM	2:19.48	2:01.29
B-Spec	2:27.88	2:08.59	GT1	1:54.96	1:39.97	SRF3	2:09.49	1:52.60
EP	2:14.39	1:56.86	GT2	1:59.38	1:43.81	STL	2:13.35	1:55.96
F5	2:03.71	1:47.57	GT3	2:06.47	1:49.97	STU	2:10.01	1:53.05
FA	1:49.95	1:35.61	GTL	2:12.46	1:55.18	T1	2:04.52	1:48.28
FC	1:57.78	1:42.42	GTX	1:54.96	1:39.97	T2	2:08.23	1:51.50
FE2	1:54.39	1:39.47	HP	2:21.00	2:02.61	T3	2:13.33	1:55.94
FF	2:03.73	1:47.59	P1	1:54.71	1:39.75	T4	2:17.86	1:59.88
FP	2:12.22	1:54.97	P2	2:01.77	1:45.89			
FV	2:17.10	1:59.22	PX	1:54.96	1:39.97			

Records are as of the publication date of these supplemental regulations

V. **IMPOUND**

- A. **MANDATORY DRIVERS MEETING:** A Drivers Meeting will be held if COVID-19 physical distancing can be maintained. **Impound All** will be given at the end of the Friday Qualifying session for each group to conduct a drivers meeting. Impound will be in the Tech Area or the PittRace podium area. Look for the signs for proper location. Drivers must follow current COVID-19 physical distancing practice during the driver meeting.

Drivers who do not participate in the Friday Qualifying session should attend the Drivers Meeting.

- B. **SPLIT STARTS:** The Race Director will consider requests for split starts at the Drivers Meeting. If a Drivers Meeting cannot be held, please see the Race Director to discuss a request for a spit start.

C. **IMPOUND:**

**Race 1:** The top three competitors in each class shall report to impound immediately following the completion of their race. Trophy presentations and photos will occur in the Victory Circle area near impound following the race.

**Race 2:** Impound **all** following completion of the race for podium ceremonies. Victory celebrations and award ceremony will be conducted in the Victory Circle area near impound following Sunday's races. Hoosier SCCA Super Tour door prizes will be awarded after each group's podium ceremonies. The driver must be present to win a door prize.





**Hoosier Racing Tire SCCA Super Tour**  
**Steel Cities Region 68<sup>th</sup> Cumberland Classic**

August 27 – 30

Pittsburgh International Race Complex  
Sanction 20 – 8358, 20-R-19880



- D. CONTACT:** GCR Section 6.11.1.E requires that the driver and car, involved in significant body contact, to stop at the designated incident investigation site for review of the incident by stewards. Drivers shall satisfy this requirement by reporting to the Race Director, Chief Steward, or run group operating steward during Impound of their race group. Drivers who do not comply with GCR Section 6.11.1.E will be referred to the Steward of the Meet (SOM).

**VI. GENERAL**

**A. RACE LENGTH:**

- a. **Super Tour: Race 1 will be 25 minutes. Race 2 will be 17 laps or 35 minutes.** When the **LAST LAP INDICATOR** is given at Start/Finish the next flag will be a checkered flag.
- b. **Great Lakes Championship: Race 1 will be 20 minutes. Race 2 will be 15 laps or 30 minutes.** When the **LAST LAP INDICATOR** is given at Start/Finish the next flag will be a checkered flag.

- B. RESULTS:** Live timing may be available during the event at SCCA.com and on Race Monitor. Live timing information is neither official nor protest-able. There will be no hardcopy distribution of results. Both provisional and official results will be available online, linked from the official event page on the SCCA web site. Final results will also be published on the Steel Cities region web site. ([stcscca.com/road-racing/](http://stcscca.com/road-racing/))

- C. START TIMES:** Schedule times are cars on course (release from Grid).

- D. EVENT SCHEDULE / RUN GROUPS:** Actual session start times may be delayed from the published schedule due to unforeseen circumstances during the event. It is the driver's responsibility to listen to the PA system and pay attention to activity on track. The schedule or run groups may only be changed (or start times advanced) at the discretion of the Race Director, with concurrence by the Event Chair, depending on pre-race entry counts or as needed to accommodate situations during the event.

- E. CANCELLATION:** Cancellation or postponement of the event will be in accordance with GCR Appendix B 1.2.B. If the event is canceled during the event, points will be awarded by SOM action.

- F. CLOTHING:** Safe apparel must be worn in the pits at all times (long pants, sleeved shirts, and closed toe shoes). Crew members on pit lane must display their event credentials at all times while on pit lane.

- G. PIT LANE:** Drivers are to maintain a safe speed on Pit Lane with **absolutely** no racing. Scrubbing tires in pit lane is prohibited.

- H. TRACK ANNOUNCEMENTS:** Track announcements will be made over the Track PA system and are available on 88.1 FM.

- I. 2-WAY RADIO OPERATION:** Operation of 2-way radios which interfere with Race Control and/or Track Communications is prohibited. Prohibited frequencies are 151.625, 154.570, 154.600, 451.01250 (digital) and other frequencies.

**J. TIRE VENDORS:**

Hoosier Tire Midwest and Royale Race Tires will be on hand to provide tire sales and service for this event. Pre-order your tires at you preferred vendor.

Hoosier Tire Midwest may be contacted at <https://www.racetires.com>.

Royale Race Tires may be contacted at [www.royaleracetires.com](http://www.royaleracetires.com).





**Hoosier Racing Tire SCCA Super Tour  
Steel Cities Region 68<sup>th</sup> Cumberland Classic**

August 27 – 30  
Pittsburgh International Race Complex  
Sanction 20 – 8358, 20-R-19880



**K. FUEL PROVIDER:** Sunoco Racing Fuel is the official fuel of Pitt Race. The following grades are available at the facility pay-at-the-pump station. There is a Sunoco mandated security program in place that will limit you to three transactions on the same card in one day. If you think you will need more fuel, bring more than one card.

- Leaded 110 Octane
- Unleaded 100 Octane
- Premium Unleaded 93 Octane (There are two pumps with 93 octane. They are dispensed from different tanks but are the same fuel)

**VII. TRACK RULES**

**Due to the continuing COVID-19 crisis, the PittRace rules are subject to change based on local and state restrictions. Please check [www.pittrac.com](http://www.pittrac.com) and [stccca.com/road-racing](http://stccca.com/road-racing) for applicable restrictions for this event. Changes to the restrictions in place at the event will be posted on the event page at [MotorsportsReg.com](http://MotorsportsReg.com) and sent to registered entrants by text message.**

- A. All persons entering the track must use the SmartWaiver process prior to arriving at the track.** Please use the waiver process for all attendees. Use the following link for the waiver. <https://waiver.smartwaiver.com/e/Hcm3HpzHuMzS7xJfoJWZPA/>
- B. All participants are subject to the PittRace Track Rules and Regulations.** Copies of the current Track Rules are available at [www.pittrac.com](http://www.pittrac.com) and are posted at the track. Violation of PittRace Rules and Regulations will be considered as violations of these supplemental regulations.
- C. QUIET HOURS:** Running of un-muffled or loud engines is prohibited between 8PM and 8AM
- D. FACILITY DAMAGE:** Damage to PittRace not covered by SCCA Insurance will be billed to the entrant by the region.
- E. UAV/DRONES:** UAV/DRONE use is prohibited at PittRace.
- F. CAMPING:** Camping is permitted at the track. There is no fee for campers not using track electrical hookups.
- G. PETS:** Pets are permitted only in designated areas and must be leashed at all times. All pets must be kept under the control of their owner. Owners are required to pick up immediately after their pets and to dispose of waste in receptacles located throughout the facility.
- H. PARKING:** No parking on the grass or in no parking zones.
- I. PAVED PADDOCK:** All paved surfaces must be protected. All participants must use flat blocks or wood squares to absorb weight beneath any equipment that may cause damage to the surface, such as jack stands and kart stands. No holes will be permitted in any asphalt surface, including but not limited to the racing surface, pit area, VDA, and paddock area.
- J. WASTE PRODUCT DISPOSAL:** All trash must be placed in proper containers. Do not place any petroleum products in trash containers. Participants must use properly marked containers for all refuse. Costs incurred by PIRC to handle or dispose of tires or trash left at the Facility will be billed to the entrant.
- K. Garages:** Garages may be available from PittRace. No electrical cords may be run from a garage to a trailer or RV.
- L. VEHICLE TESTING:** Vehicle testing, brake bedding, shift point checks, etc... on paddock roads is prohibited.
- M. FIRES:** No open fires are allowed. Grills and like heating equipment may be used only in designated areas.

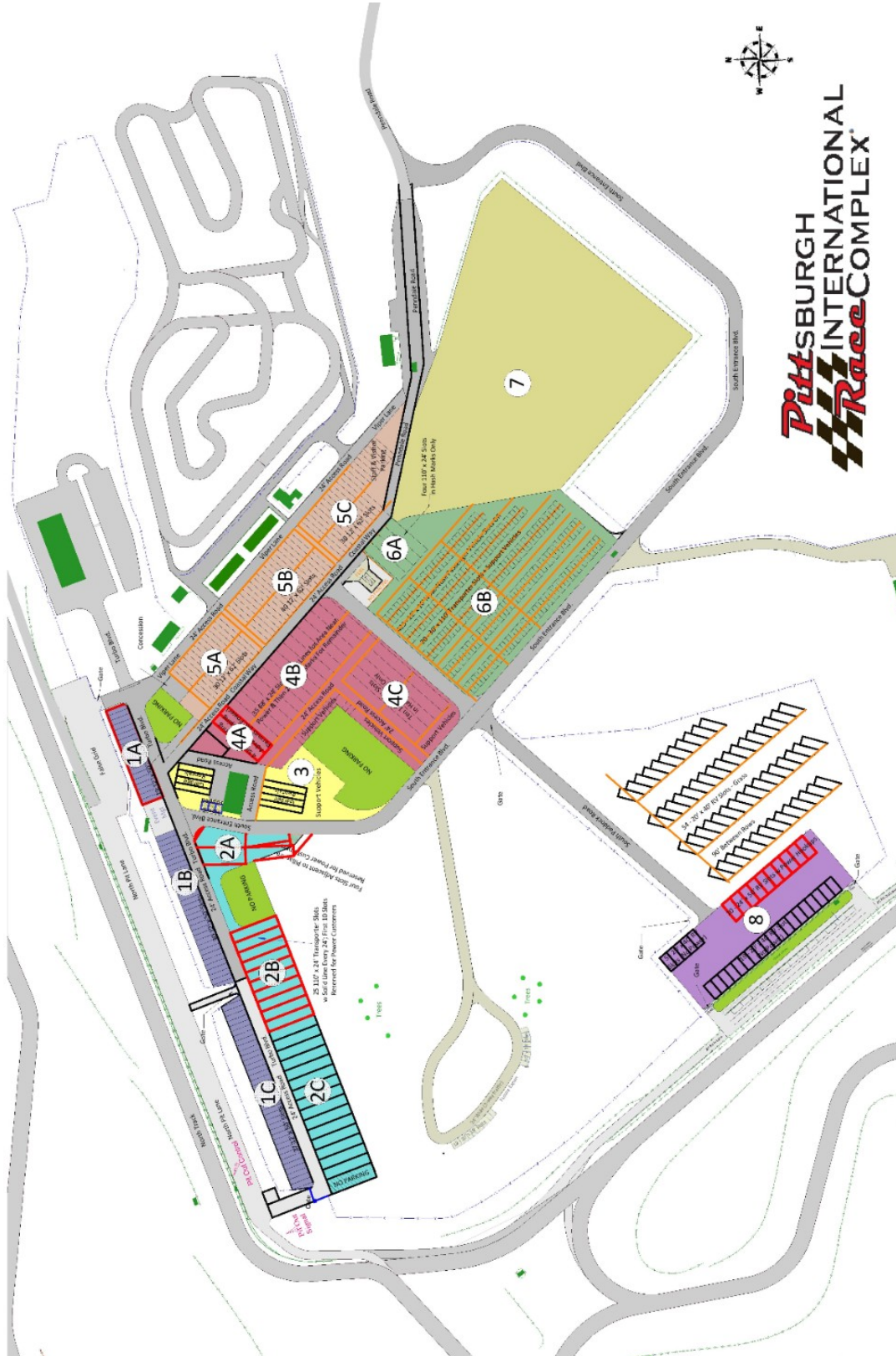




# Hoosier Racing Tire SCCA Super Tour Steel Cities Region 68<sup>th</sup> Cumberland Classic

August 27 - 30

Pittsburgh International Race Complex  
Sanction 20 - 8358, 20-R-19880





**Hoosier Racing Tire SCCA Super Tour  
Steel Cities Region 68<sup>th</sup> Cumberland Classic**

August 27 – 30  
Pittsburgh International Race Complex  
Sanction 20 – 8358, 20-R-19880



**VIII. EVENT OFFICIALS:**

East Super Tour Series Race Director	Doug Nickel	<a href="mailto:dlnickel@me.com">dlnickel@me.com</a>	(302) 373-7660
East Super Tour Series Administrator	Gayle Lorenz	<a href="mailto:majorseast@scca.com">majorseast@scca.com</a>	
East Super Tour Series Clerk of the Course	Fred Brinkel	<a href="mailto:fred@fbrinkel.com">fred@fbrinkel.com</a>	(703) 945-0027
East Super Tour Series Chief of Tech	Scott Schmidt		
East Super Tour Series Timing Resources	Bill Skibbe Carol RReber		
East Super Tour Series PR Manager	Reece White		
Chief Steward	Gene Kern	<a href="mailto:gene.kern@verizon.net">gene.kern@verizon.net</a>	(724) 678-0990
Chairman of the SOM	Russ Gardner	<a href="mailto:russ@russgardner.com">russ@russgardner.com</a>	(443) 540-8383
Assistant Chief Steward–Safety (ACS – Safety)	Don Baker	<a href="mailto:dcbakerscca@yahoo.com">dcbakerscca@yahoo.com</a>	(724) 863-3770
ACS Safety	TBD		
Stewards of the Meeting (SOM)	TBD		
SOM	TBD		
Race Chairperson Assistant Race Chairperson	Paula Hawthorne Bob Albert	<a href="mailto:posypaulie@gmail.com">posypaulie@gmail.com</a> <a href="mailto:racerbob11@comcast.net">racerbob11@comcast.net</a>	(412) 378-4223 (412) 551-5311
Chief Course Marshal	TBD		
Chief of Emergency Services	Walt Matenkosky	<a href="mailto:wmatenkosky@hotmail.com">wmatenkosky@hotmail.com</a>	(412) 480-3273
Chief of Flagging & Communications	Ray Dembowski	<a href="mailto:rkdembow@comcast.net">rkdembow@comcast.net</a>	(412) 327-3286
Chief Registrar	Meichelle Connolly	<a href="mailto:mconssca@gmail.com">mconssca@gmail.com</a>	(412) 335-5690
Chief of Sound Control	Nathan Gess	<a href="mailto:dodint@gmail.com">dodint@gmail.com</a>	(724) 972-2163
Chief Starter	Stephen Mortimer	<a href="mailto:sccasteve@gmail.com">sccasteve@gmail.com</a>	(412) 600-1025
Chief Technical Inspector	Paul Morrison	<a href="mailto:fuelports@hotmail.com">fuelports@hotmail.com</a>	
Chief of Timing and Scoring	Jeff Hutzelman	<a href="mailto:jhutz000@gmail.com">jhutz000@gmail.com</a>	(412) 401 8348
Chief of Pit	Bill Stewart	<a href="mailto:bstewart@sccaonline.net">bstewart@sccaonline.net</a>	(814) 774-0178
Chief of Grid	Don Johnson	<a href="mailto:dajohnson49@verizon.net">dajohnson49@verizon.net</a>	(412) 951-7717
Announcers	Ted Sohier	<a href="mailto:sohierted@gmail.com">sohierted@gmail.com</a>	(412) 561 0903
Pace Car	Budd Baer	<a href="http://www.buddbaer.com">www.buddbaer.com</a>	(724) 914-6670
Pace/Safety Car Driver			







**Hoosier Racing Tire SCCA Super Tour  
Steel Cities Region 68<sup>th</sup> Cumberland Classic**

August 27 – 30  
Pittsburgh International Race Complex  
Sanction 20 – 8358, 20-R-19880



## Hoosier Racing Tire SCCA Super Tour Event Schedule

Group 1	GT1, GT2, GT3, AS, T1, GTX, PX	Group 5	FA, FC, FE2, FX, P1, P2
Group 2	SM, B-Spec	Group 6	STL, STU, T2, T3, T4
Group 3	SRF3	Group 7	EP, FP, HP, GTL
Group 4	F5, FF, FV	Group 8	Great Lakes Championship (FC/CFC)

### Thursday, August 27, 2020

6:00 PM	Track opens for competitor load in
5:00 PM – 9:00 PM	Registration on the first floor of the timing and scoring building (Driver Information)
5:30 PM – 9:00 PM	Tech Inspection (Contact Chief of Tech for Annual Tech Appointment) (Express Tech at Registration. Bring your logbook (and your helmet) if you need a 2020 sticker.)

### Friday, August 28, 2020

6:30 AM – 11:00 AM	Registration on the first floor of the timing and scoring building (Driver Information)		
6:45 AM – 11:30 AM	Tech Inspection/Scales (After impound)		
7:30 AM	Flag meeting at the garage		
8:30 AM	20 minute Practice, Group 1	1:20 PM	20 minute Qualifying 1, Group 1
9:00 AM	20 minute Practice, Group 2	1:50 PM	20 minute Qualifying 1, Group 2
9:30 AM	20 minute Practice, Group 3	2:20 PM	20 minute Qualifying 1, Group 3
10:00 AM	20 minute Practice, Group 4	2:50 PM	20 minute Qualifying 1, Group 4
10:30 AM	20 minute Practice, Group 5	3:20 PM	20 minute Qualifying 1, Group 5
11:00 AM	20 minute Practice, Group 6	3:50 PM	20 minute Qualifying 1, Group 6
11:30 AM	20 minute Practice, Group 7	4:20 PM	20 minute Qualifying 1, Group 7
12:00 PM	15 minute Practice, Group 8	4:50 PM	15 minute Qualifying 1, Group 8
12:20 PM	Lunch (1 Hour)		
<b>Friday Night Party will to be determined based on COVID-19 restrictions at the time.</b>			

### Saturday, August 29, 2020

6:30 AM – 11:00 AM	Registration on the first floor of the timing and scoring building (Driver Information)		
6:45 AM – 11:30 AM	Tech Inspection/Scales (After impound)		
7:30 AM	Flag meeting at the garage		
8:30 AM	15 minute Qualifying 2, Group 1	12:40 PM	25 Minute Race 1, Group 1
8:55 AM	15 minute Qualifying 2, Group 2	1:15 PM	25 Minute Race 1, Group 2
9:20 AM	15 minute Qualifying 2, Group 3	1:50 PM	25 Minute Race 1, Group 3
9:45 AM	15 minute Qualifying 2, Group 4	2:25 PM	25 Minute Race 1, Group 4
10:10 AM	15 minute Qualifying 2, Group 5	3:00 PM	25 Minute Race 1, Group 5
10:35 AM	15 minute Qualifying 2, Group 6	3:35 PM	25 Minute Race 1, Group 6
11:00 AM	15 minute Qualifying 2, Group 7	4:10 PM	25 Minute Race 1, Group 7
11:25 AM	15 minute Qualifying 2, Group 8	4:45 PM	20 Minute Race 1, Group 8
11:40 AM	Lunch (1 Hour)		
<b>Saturday Night Party will be determined based on COVID-19 restrictions at the time.</b>			

### Sunday, August 30, 2020

7:00 AM – 11:00 AM	Registration		
7:30 AM – 11:30 AM	Tech Inspection/Scales (After impound)		
7:45 AM	Flag Meeting at the garage.		
8:30 AM	Warm-Up, Closed Wheel	12:50 PM	17 lap Race 2 (35 minute max), Group 4
8:50 AM	Warm-Up, Open Wheel	1:45 PM	17 lap Race 2 (35 minute max), Group 5
9:20 AM	17 lap Race 2 (35 minute max), Group 1	2:40 PM	17 lap Race 2 (35 minute max), Group 6
10:15 AM	17 lap Race 2 (35 minute max), Group 2	3:35 PM	17 lap Race 2 (35 minute max), Group 7
11:10 AM	17 lap Race 2 (35 minute max), Group 3	4:30 PM	15 lap Race 2 (35 minute max), Group 8
11:50 AM	Lunch (1 Hour)		
<b>Thanks for racing with us! Safe Travels!</b>			

